



COMPLETESECURITYPROTECTS.COM

FIRE EVACUATION

Home Escape Planning Tools

SAFETY TIPS

MAKE a home escape plan! Draw a map of your home showing all doors and windows. Discuss the plan with everyone in your home.

KNOW at least two ways out of every room, if possible. Make sure all doors and windows leading outside open easily.

HAVE an outside meeting place (like a tree, light pole, or mailbox).

PRACTICE your home fire drill at night and during the day with everyone in your home, twice a year.

PRACTICE using different ways out.

TEACH children how to escape on their own in case you can't help them.

CLOSE doors behind you as you leave.

IF THE ALARM SOUNDS...

If the smoke alarm sounds, **GET OUT AND STAY OUT.** Never go back inside.

If you have to escape through smoke, **GET LOW AND GO** under the smoke to your way out

CALL the fire department from the outside of your house. Memorize your fire department's emergency phone number and write it below.

FIRE SAFETY EVALUATION

There is one smoke alarm on every level of the home and inside and outside each sleeping area. Circle one: Yes / No

Smoke alarms are tested and cleaned monthly. Circle one: Yes / No

Smoke alarm batteries are changed as needed. Circle one: Yes / No

Smoke alarms are less than 5 years old. Circle one: Yes / No

Cooking area is free from items that can catch fire. Circle one: Yes / No

Electrical cords do not run under rugs. Circle one: Yes / No

Electrical cords are not frayed or cracked. Circle one: Yes / No

Clothes dryer, lint filter and venting system are clean. Circle one: Yes / No

Candles are in sturdy fire-proof containers that can't be tipped over. Circle one: Yes / No

Carbon monoxide alarms are located on each level of the home. Circle one: Yes / No

Carbon monoxide alarms are less than 7 years old. Circle one: Yes / No

Matches and lighters are secured out of children's sight. Circle one: Yes / No

CONTACT US FOR MORE INFORMATION
501-833-9700

PEACEOFMIND@COMPLETESECURITYPROTECTS.COM



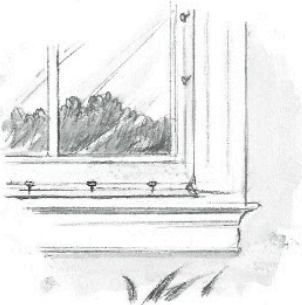
CLEAR YOUR ESCAPE ROUTES!



COMPLETESECURITYPROTECTS.COM



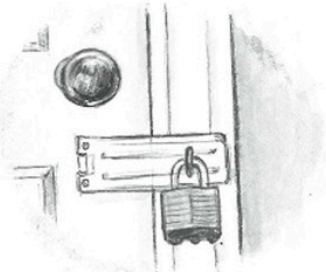
When arranging furniture and other items, make sure that you're not blocking doors or windows with televisions, dressers, tables, couches, or potted plants. Every room needs two ways out.



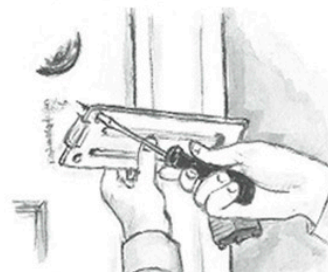
Never nail or paint windows shut. Opening them could be crucial in the event of a home fire. Inspect your windows and doors. remove nails or paint that could prevent using windows or doors for escape.



A pile of toys or holiday decorations in front of a doorway can block your escape route and could be a threat to the safety of you and your family. Be sure to remove toys that may be blocking doorways. And always place trees and holiday decorations away from doors and windows that would be used to escape.

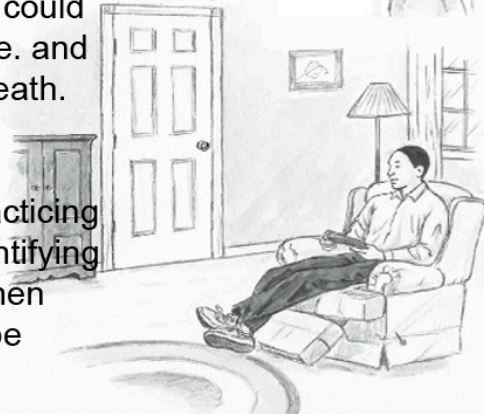


Pad locks can be a barrier to safety. In event of a home fire, you'll need access to every escape route. Remove padlocks so the door or window can be used as an escape route



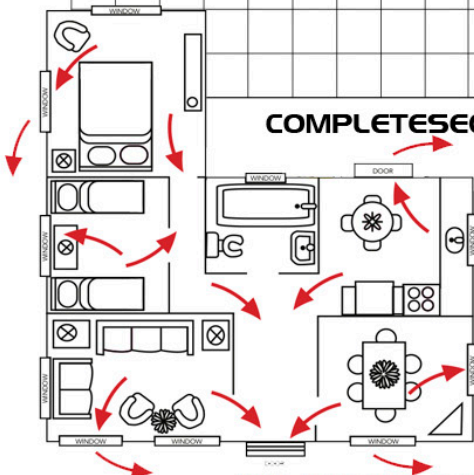
Items that block doors and windows in your home could keep you from escaping in the event of a home fire, and that could mean the difference between life and death. So unblock your exits today!

The key to your family's safety is planning and practicing a home fire escape plan twice a year. Start by identifying two escape routes out of each room, if possible, then make sure that each of those escape routes can be used safely by everyone.



HOW TO MAKE A HOME FIRE ESCAPE PLAN

Use the space below to create your home fire escape plan.



COMPLETESECURITYPROTECTS.COM ~ Ph. 501-833-9700

Draw a floor plan or map of your home. Show all doors and windows

Mark two ways out of each room.

~Does your home have any smoke detectors? Yes / No

~How many smoke alarms do you have? _____

~Is (are) your smoke alarm(s) working? Yes / No

~Are your smoke alarms monitored so in the event of a fire the authorities will notified automatically? Yes / No

Remember only working smoke detectors save lives